



Epiphany Tree Burning Service

Sunday January 8th at 5:00pm

(at the gravel pit across from Engebretson Disposal)

Epiphany literally means revealing and we will celebrate this revealing revelation of Jesus Christ with a reading of the Magi Story and singing of Christmas and Epiphany Carols. The burning of the trees will help us focus on the image of closing out the Christmas season and ushering in the revelation of Jesus Christ as the Son of God. Following this worship service, we will gather at church for a Chili Supper and left over Christmas goodies. So save your live Christmas trees and some Christmas goodies to share with others and join us for this fun evening!

A sign-up sheet is in the Narthex for those that wish to have their tree picked up and for volunteers to pick them up!

Directions: take Highway 9 South towards Hancock, turn RIGHT on Industrial Blvd (by Westmor Industries). Turn LEFT (immediately after the railroad tracks) on County Road 59. The gravel pit is located on the RIGHT side of the road across from Engebretson Disposal.



Join us for our
Annual Meeting
Sunday, January 29th
starting at 9:30am!

We will be electing our church council for 2012, discussing our budget for 2012 and hear reports from 2011. Be sure to pick up your Annual Report prior to the meeting and take part in this important yearly meeting.

NEW WINE. Sunday!

Be sure to join us

Sunday, January 29th

as our "Winers" lead both worship services at 8:15am and 10:45am....as they share with us a message in music and drama....and you'll get a sneak-peak at this year's production!

A free-will offering for New Wine will be received.

Installation Sunday is January 15th

Please join us on Sunday, January 15th for the Installation Service for Pastor Paul. Pastor Linda Pedersen from the SW Synod will be our guest preacher and officiate at both the 8:15am and 10:45am worship services. Stay afterwards for the POTLUCK at noon!

from Pastor Paul...

JANUARY 2012 IN THIS ISSUE

- 2) from Pastor Paul
- 3) Youth (grades 7-12)
- 4) Missionary for the Day
& Etcetera
- 5) Council Highlights
- 6) Mission of the Month
- 7) Worship Servants
- 8) Parish Nurse News
& Theatre
- 9) First Extra's
- 10) January Birthdays
& Last Things
- 11) January Calendar

First Lutheran Church

200 East 5th Street
Morris, MN 56267

Phone: 320-589-3242

website:

www.firstlutheranmorris.org

email:

office@firstlutheranmorris.org

Worship Schedule

8:15am & 10:45am

Holy Communion served each
Sunday at one of the services.

Coffee Hour: 9:15am

Education Hour: 9:30am

Televised Services:

3:00pm on Monday and
Thursday on Channel 6 or 8

Ministry Needs & Staffing

I realize as I get older, I have grown more accustomed to set patterns; predictable routines that I rely on for sense of order – especially in the midst of stress and chaos. When interruptions or things “pop up” unexpectedly, I find myself having to work harder to adjust and “roll with it”. I’ve wondered if these are signs of aging or if it’s something else. We often say that older people are “set in their ways.” That may be the case. But I believe we are all “set in our ways”, if this means we like things a certain way or have strong opinions.

I’ve worked in several congregations and have experienced kids and young adults either “set in their ways” or liking things a certain way or having strong opinions just as much as anyone else. This is especially the case when there has been a prior history or a “tradition” of doing something. First Lutheran Church, Morris, Minnesota is no different. Younger and older people can both have difficulty with change or trying something new.

As we consider staffing, **we will need to consider various options**. We may have to be creative and open to ideas. Despite what you have heard, it is actually difficult to find pastors. Finding good people to serve in churches is a unique challenge.

It is probably no surprise that what I heard as a ministry need is **visitations and youth ministry**. I agree that there is a serious lack of overall ministry to our youth and young families. There are several good things in place. However, the overall foundational ministry needs serious consideration. Visitation ministry is a serious concern. It will continue to be a challenge as our population ages. Long range planning suggests that congregations need to step up their efforts in seniors’ ministry considering the fact the Baby Boomers are retiring and is the largest segment of our population.

The Church Council is looking at scheduling open **forums and special focus group meetings** for the purpose of discussing staffing needs. This will take place immediately and continue for several months. Please attend the given opportunities and openly listen, share, and discuss. This is our opportunity to help pave our way into the next era.

It is amazing how God created us to be adaptable to situations and challenges. Even so, transitions can be difficult. Some things will change. Many things will remain the same. Many thriving congregation understand the need to evaluate the ministry needs at the present time in their current context. More importantly, they have learned to adapt to those needs. This means that vibrant congregations have a “mindset” willing to adapt to **what God is doing**.

Yes! That’s right, we will need to be praying, listening, and discerning what God is doing in this congregation, in our community, and throughout the world. Then we need to **see how we fit into God’s Mission**. For it is never about what I want, what you want, nor what we want. It’s about remaining faithful by discerning what God is doing and how we fit into God’s mission.

Pastor Paul

YOUTH.....GRADES 7-12

STONE SOUP and Bread Supper Sunday January 29th from 2-4pm at Faith Lutheran

Attention all 7th-12th graders!!
Come and help with the making of soup
(which will be delivered to shut-ins).
While the soup simmers enjoy some games
or a movie! **INVITE YOUR FRIENDS!!**

NEW WINE. REHEARSAL SCHEDULE

TUESDAY, JAN 3 PIZZA ORDERS ARE DUE!!
SUNDAY, JAN 8 7PM REHEARSAL
SATURDAY, JAN 14 9AM PIZZA FACTORY
SUNDAY, JAN 15 7PM REHEARSAL
SUNDAY, JAN 22 7PM REHEARSAL
SATURDAY, JAN 28 9AM NEW WINE SUNDAY REHEARSAL
SUNDAY, JAN 29
7AM NEW WINE SUNDAY AT FIRST LUTHERAN
7PM EVERYONE

Last call for pizza orders!

All New Wine pizza orders must be in by January 3rd! Orders yours today!

Breakfast Club

Mark Your Calendars! Breakfast Club starts at 7:11am on Friday, January 6th at DeToy's! The food is good...the conversation is always lively and thought-provoking and sometimes.... not often mind you...just a little silly. First timers get a FREE breakfast!

Confirmation Schedule January & February

Date	Time	Event	Meal
Wed., Jan 11	5:30-7:30pm	Confirmation Classes	Amundson/Huebner
Wed., Jan 18	5:30-7:30pm	Confirmation Classes	Ohren/Bowman
Wed., Jan 25	5:30-7:30pm	Confirmation Classes	Holland/Sparby
Wed., Feb 8	5:30-7:30pm	Confirmation Classes	Amundson/Huebner
Wed., Feb 15	5:30-7:30pm	Confirmation Classes	Siegel/Abler
Fri-Sat Feb 17-18	7th, 8th & 9th Grade Retreat at Luther Crest		
Wed., Feb 22 & 29	Lenten Worship. No classes; meet with mentors		

ATTENTION ALL
7TH-12TH
GRADERS!



MARK YOUR CALENDARS
AND JOIN US FOR A FUN-FILLED
DAY AT ANDES TOWER HILLS!

WHEN: MONDAY, JANUARY 16TH

We will meet at First Lutheran at 9am and travel by bus to Andes; returning to Morris around 6:30pm.

WHO: All 7th-12th graders and their friends!
Parents are also welcome to come along!

COST: \$36 Skiing (includes lift and ski rental)
\$46 Boarding (includes lift and board rental)
\$10 Tubing for 2 hours (\$4 for each additional hour)

CALL OR SIGN UP IN THE CHURCH OFFICE

**Support Missionary For A Day
and honor a loved one ~ \$15.00/day**

Pastor Dirk, Sarah, Eva and Ellen Stadtlander are ELCA missionaries serving in Senegal. They were called to missionary service in 2005 after Dirk's graduation from Wartburg Seminary. The Stadtlanders moved to Dakar, Senegal where they began work with Lutheran Christians. In the spring of 2007 they were reassigned to Linguere, Senegal where they work with the Fulbe Christians in the area. Through our support they are able to share the Word and support families and friends in West Africa!



- Dec 3 In memory of Slim Hokanson
- Dec 4 In memory of my sister & brother, Elizabeth & David Eidsvold from Gary
- Dec 5 In loving memory of Dewey Solvie on his birthday
- Dec 6 In honor of past Interim Pastors
- Dec 7 In honor of Sylvia Yarger
- Dec 8 In honor of Lutheran Campus Ministry
- Dec 9 In memory of Slim Hokanson from his family
- Dec 10 In honor of Lutheran Campus Ministry
- Dec 11 In memory of Lillian Halbakken from Sylvia Yarger
- Dec 12 In honor of Sylvia Yarger
- Dec 13 In memory of Greg Staples on his birthday from mom and dad
- Dec 14 In memory of Slim Hokanson
- Dec 15 In memory of Ione Sparby
- Dec 16 In memory of Ione Sparby
- Dec 17 In honor of Sylvia Yarger
- Dec 19 In memory of Stacy Erdal's father from the Sparbys
- Dec 20 In memory of Duane Podoll from Arlene Fellows
- Dec 21 In memory of Ione Sparby
- Dec 22 In memory of Ione Sparby
- Dec 23 In memory of Duane Podoll by Leon & Marilyn Smith
- Dec 24 In memory of Slim Hokanson
- Dec 25 In honor of Sylvia Yarger
- Dec 26 In loving memory of my husband Gordon from Carolyn Smith
- Dec 27 In memory of Duane Podoll by Charles & Marlene Seip
- Dec 28 In memory of Slim Hokanson
- Dec 30 In memory of Duane Podoll by Leon & Marilyn Smith
- Dec 31 In honor of Lutheran Campus Ministry

Annual Reports If you haven't turn in your annual report, please do so as soon as possible! They can be dropped them off at the church office or email them to office@firstlutheranmorris.org.

Noising Offering During the Advent Season, we collected a special noisy offering. The following was collected and donated to:

- \$285.46** Stevens County Food Shelf
- \$ 71.07** Mitten Tree
- \$ 70.92** Toys for Tots
- \$108.35** Salvation Army (Red Kettle)

All-Committee Night

Tuesday, January 3rd at 6:45pm
Worship & Music Committee at 6:00pm

Education Committee meets
on Thursday, January 5th at 6:00pm

BAPTISM SUNDAY

In connection with Baptism of our Lord Sunday, the congregation of First Lutheran Church would like to recognize and honor everyone who was baptized in the past year. We will recognize these people at the 10:45am worship service on Sunday, January 8, 2012.

Being honored at this service are: James Haas, Carlos Marquez, Levi Staples, Michael Kolden, Wyatt Schultz and McKenzie Just.



**A LOOK
at the
BUDGET**

	Actual for November	Actual for year
Offerings	\$31,092.44	\$254,238.19
Expenses	\$29,592.49	\$253,467.16
Offerings minus Expenses	\$1,499.95	\$771.03

COUNCIL HIGHLIGHTS

First Lutheran Church Council Minutes

December 13, 2011

Members Present: Kyle Kepner, Rhonda Lair, Deb Brunko, Dave Jungst, Jim Wellendorf, Mark Mattheis, Nicole Bakker, Ray Bowman, Tom Grotjohn, Linda Holland, Bob Heck.

Members Absent: none. **Staff Present:** Pastor Paul

Secretary's Report: Motion made by Rhonda, seconded by Tom and carried to approve the minutes from the last meeting.

Treasurer's Report: Treasurer's report was reviewed. Balance is \$13,166.42. A motion was made by Tom and seconded by Ray to use part of the \$13,166.42 to balance deficit accounts and give a percentage of what is left to a charitable cause to be determined later. Motion carried.

Staff Report from Pastor Paul: Annual reports are due December 30th. He thanked us for our support and prayers during this difficult time. He enjoyed the Willmar Youth Gathering. The bible study between services has been well attended.

Committee Reports:

Property – The bell tower windows and upper classroom windows will be replaced. More bible racks in the pews have been requested. Pastor Paul will be getting a new desk and table with chairs for his office.

Education – Discussion was held about the past education committee, Sunday school, and VBS in the past years and our current set up. We discussed what the education committee should be/could be. Pastor Paul would like us to consider joining with Faith for VBS. The Christmas Program will be held on Sunday, December 18th at 4 PM. Goody bags will be handed out to the children. Cookies with apple cider/juice will be served following the program. Time, Talent and Treasures were discussed.

Worship & Music – It was discussed and decided that pie after the Thanksgiving service would be better than before. We have had positive feedback on the Advent decorations. It was discussed to have several people be photographers and take more pictures during activities and services to post on the bulletin board and possibly have a slide show or video at the annual meetings. Discussed Epiphany decorations. Planned Epiphany Tree Burning service for January 8th at 5:00 pm. Chili, left over Christmas goodies and cider/juice will be served at the church following.

Stewardship – Discussed giving patterns.

Youth – no report

Congregational Life – Met with a representative from the company that will be doing the church directory.

Mission & Evangelism – no committee

Congregation Communication – discussed Sunday service times.

Kyle has not received any names from the Synod for interim candidates.

Nominating committee gave an update.

Personnel committee reported that the staff reviews are complete.

Budget committee reported that the Interim and Associate Pastor positions will need to be budgeted for 2012.

Annual Meeting is January 29th between services.

A special council meeting will be held on January 3rd at 7:30.

Proceeds from the fall dinner came to \$4700.41. A motion was made by Tom and seconded by Dave to give half of the proceeds to the endowment committee to disperse with the other half to be dispersed at a later date.

We are in need of a person to fill the term of Jill VanKempen on the LCM board. Please contact the church office or Pastor Paul if you are interested.

A motion was made by Jim and seconded by Mark to move the New Wine account to Riverwood Bank so that all of the churches accounts are in one bank which will make transfers easier for the financial secretary. Motion carried.

Future staffing was discussed.

We have received a request for seminary support to Luther Seminary from Chris Richards, son of Jeanne Richards. A motion was made by Nikki and seconded by Tom and carried to support Chris.

With our current giving trends, we are looking at a shortfall of \$54,000. This includes a projected giving of \$31,000 based on previous trends for the last 3 Sundays in December as well as the Christmas worship services. January 5th is the deadline for 2011 giving. Checks must be dated 12/31/2011.

The Lord's Prayer was recited in unison. Meeting adjourned at 8:00 pm.

Respectfully submitted,
Deb Brunko, Council Secretary



Mission of the Month!



God's work. Our hands.

Seminary Support

In baptism, God calls all Christians to use their gifts to share in the ministry of Jesus Christ in their daily lives. In order to minister most effectively, however, the church also needs persons with particular leadership gifts to serve in its rostered ministries.

- ELCA seminaries provide high quality theological education which is both deeply Lutheran and profoundly ecumenical.
- ELCA seminaries play vital roles in the church and help shape the vision for the church of the future.
- The gifted and committed faculty at ELCA seminaries are experts in their academic disciplines and people of faith dedicated to forming leaders for the ministries of this church.
- Daily worship, life in community, and spiritual formation are integral components of theological education at an ELCA seminary.
- ELCA seminaries cooperate with one another and with ecumenical partners to enrich educational offerings and opportunities for dialogue.
- Practice and reflection on ministry occur regularly and shape the entire curriculum.
- Candidates for ordained ministry in the ELCA are required to attend an ELCA seminary for at least one year.
- Tuition at ELCA seminaries covers less than one fourth of educational costs. The remainder is supported by church grants, endowments, and gifts from ELCA members.



Brought to you by the First Lutheran Stewardship Committee

JANUARY WORSHIP SERVANTS

SUNDAY, JANUARY 1

LECTOR: 8:15am—Kent Swenson 10:45am—Steve Just
USHER: 8:15am—Kent & Erica Swenson, Greg Fynboh, Michael Bjorklund 10:45am: Bob & Nadine Heck, Rich & Judy Buro
GREETERS: 8:15am—Liz Harris 10:45am—Bob & Nadine Heck
ACOLYTES: 8:15am—Rebecca & Elizabeth Holland 10:45am—Karli Siegel & Andrew Ulrich
COMMUNION PREP: 8:15am—Liz Harris **COMMUNION SERVERS:** 8:15am—David & Yvonne Evenson
NURSERY: 10:45am—Michelle Just **VIDEOGRAPHER:** 10:45am—Rich & Kendra Buro
COFFEE HOUR: 9:15 to 10:30am—Sharon Ehlers

SUNDAY, JANUARY 8

LECTOR: 8:15am—Chris Jerke 10:45am—Marty Ohren
USHER: 8:15am—Jim & Jacqui Hills, Mike & Chris Jerke 10:45am—Steve Wagner, Marty & Kristin Ohren, Ward Voorhees
GREETERS: 8:15am—Mike & Chris Jerke family, Jim & Jacqui Hills family 10:45am—Carol Voorhees & Tom Grotjohn
ACOLYTES: 8:15am—Blaine & Austin Hills 10:45am—Cole Watzke & Thomas Wulff
COMMUNION PREP: 10:45am—Carole Johnson **COMMUNION SERVERS:** 10:45am—Tom Grotjohn & Ward Voorhees
NURSERY: 10:45am—Kyle & Amy Dougherty **VIDEOGRAPHER:** 10:45am—Steve Wagner
COFFEE HOUR: 9:15 to 10:30am—Jim & Nina Overland

SUNDAY, JANUARY 15

LECTOR: 8:15am—Nina Overland 10:45am—Nancy Sparby
USHER: 8:15am—Dorwin Tschetter, Jim Overland, Doug Beyer 10:45am—Tom & Nancy Grotjohn, John & Tabitha Amundson
GREETERS: 8:15am—Lauren Carlson 10:45am—Jone Anderson, Tom & Nancy Grotjohn
ACOLYTES: 8:15am—Cody Beyer & Thomas Holland 10:45am—Blake & Carter Amundson
COMMUNION PREP: 8:15am—Nina Overland **COMMUNION SERVERS:** 8:15am—Lauren Carlson, Tom Grotjohn
NURSERY: 10:45am—Jone Anderson **VIDEOGRAPHER:** 10:45am—Tom Grotjohn
COFFEE HOUR: 9:15 to 10:30am—Priscilla Wood, Jerry Siebel, Steve & Jill VanKempen

SUNDAY, JANUARY 22

LECTOR: 8:15am—Allan Saugstad 10:45am—Mike Odello
USHER: 8:15am—Allan Saugstad, Doug, Sharon & Wade Ehlers 10:45am—Mike Rose, Steve & Jill VanKempen, Kyle Kepner
GREETERS: 8:15am—Doug & Sharon Ehlers family 10:45am—Mike & Denise Odello family, Kyle & Heather Kepner family
ACOLYTES: 8:14am—Jackson Boever & Wade Ehlers 10:45am—Kendra Buro & Brenna Monroe
COMMUNION PREP: 10:45am—Jane Johnson **COMMUNION SERVERS:** 10:45am—Kyle Kepner & Mick Rose
NURSERY: 10:45am—Heather Kepner **VIDEOGRAPHER:** 10:45am—Bruce McCormack
COFFEE HOUR: 9:15 to 10:30am—Heidi Suess, Jim & Sharon VanAlstine

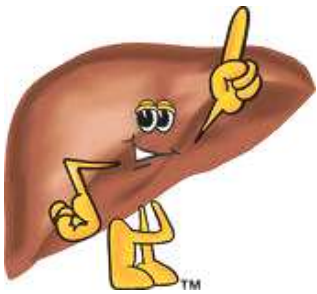
NEW WINE SUNDAY, JANUARY 29

LECTOR: 8:15am—New Wine 10:45am—New Wine
USHER: 8:15am—Ward Voorhees, Greg Abler and New Wine 10:45am—Doug & Sharon Ehlers and New Wine
GREETERS: 8:15am—New Wine 10:45am—New Wine
ACOLYTES: 8:14am—Alycia Abler & Garner Swenson 10:45am—Jacob Hanson & Ryan Bowman
COMMUNION PREP: 10:45am—Ranee Hokanson **COMMUNION SERVERS:** 10:45am—Wade Ehlers, Sean Brustuen, New Wine
NURSERY: 10:45am—Nikki Bakker **VIDEOGRAPHER:** 10:45am—Steve Hokanson
COFFEE HOUR: 9:15 to 10:30am—Sharon Ehlers and Emilie Brustuen

Attention Peace Service Group!

February is your month to sign up for coffee hour servers and any special potluck that may occur during the month. Please sign up on the bulletin board by the church office, or contact your service group chairperson (highlighted in bold).

Eugene & Cathy Anderson, Lloyd Anderson, Ruth Bentson, Sarah Buchanan, Dave & Lisa Dybdal, Dennis & Sandy Fuhrman, **Greg & Naomi Fynboh**, Don Geizler, Glen & Kahla Gillespie, Paul & Sandy Grove, Tim & Kristin Grove, David & Jamey Harrison, Mark & Mary Huebner, Ray & Jane Johnson, Dave Jungst & Lindy Ekola, **Kyle & Heather Kepner**, Mike & Rhonda Lair, Paul & Christine Mahoney, David & Dorothy Minners, Troy & Beth Minners, Diane Nelson, Mike & Denise Odello, John & Jean Schultz, Jo Solvie, Randy & Bobbi Jo Staples, Robert & Jeri Staples, Scott Staples, Robert & Joanne Thompson, Mary Jane Utech, Sally Utech, Jim & Peg Wellendorf, Neil & Pam Wiese.



What your liver wants you to know

As you liver, I'm actually one of the most important organs in your body. Consider my many jobs, including:

- Changing your food to energy
- Making bile to help digest food
- Cleaning poisonous chemicals (including alcohol and drugs) from your blood
- Storing your body's vitamins and minerals
- Making proteins that help your blood clot

I'm also susceptible to many types of liver disease. Fortunately, however, many of these diseases can be prevented. Help reduce your risk with these steps:

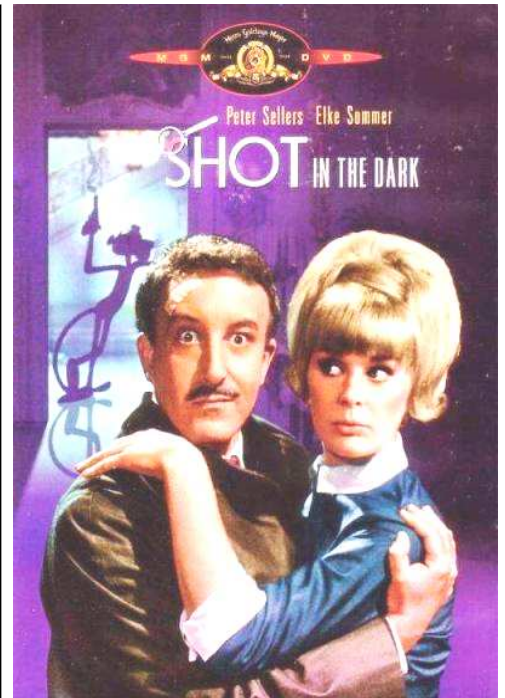
- **Get vaccinated.** Ask your doctor about the hepatitis A and B vaccines.
- **Manage your weight.** Extra weight can increase your risk of nonalcoholic fatty liver disease.
- **Limit alcohol use.** That's no more than two drinks a day for men and one drink a day for women.
- **Limit exposure to toxins.** When working with chemicals, stay in well-ventilated areas, wear a mask and gloves, and wash well afterward.
- **Get screened for hepatitis.** If you're at risk of hepatitis A, B or C, such as if you work in a health care facility, have had multiple sexual partners, have a family member or partner with hepatitis, or have shared drug needles, talk to your doctor about being tested.
- **Follow dosing directions when taking acetaminophen.** Though acetaminophen is safe when taken as directed, taking more than the recommended dose can cause severe liver damage.
- **Watch your diet.** Replace fatty foods with fruits, vegetables and whole grains.

Taken from the Mayo Clinic newsletter.

In Christ,
Vicki Maanum, RN and Kristi Abler, RN

Now Showing in the Church Theatre

**Friday,
January 20th
7:00pm**



A Shot in the Dark....Sight gags and pratfalls abound in this film about an attractive parlor maid (Elke Sommer) accused of killing her lothario lover. Enter the bumbling Inspector Clouseau (Peter Sellers), who's intent on proving the young beauty's innocence even though the evidence indicates otherwise. Clouseau will go to any lengths -- including a stakeout at a nudist camp to unravel the case and nail the real murderer. **Rated PG 1964 103 minutes. The Theatre Committee recommends a rating of R for risqué scenes; not recommended for children.**



**FREE ADMISSION
FREE POPCORN**



**INVITE YOUR
FRIENDS FOR A NIGHT AT THE MOVIES!**

FIRST EXTRA'S

Office Closed The office will be closed on Monday, January 2nd in honor of the New Year's holiday.

Prayer Chain Member Are you interested in becoming one of our prayer chain members? We now have two prayer chain options.....a telephone chain.....or an email chain. Please call the church office for more information or to sign up.

Help Wanted! We are in need of some volunteers to help put away the Christmas decorations at church during the week of January 2nd. If you are able to help out, please call the church office at 589-3242.

Poinsettia Plants If you ordered a poinsettia plant, we ask that you please pick it up by January 4th. Plants remaining after January 4th will be disposed of.

Zipporah Bible Study will meet on Tuesday, January 17th at 7:00pm.

How Can You Show Your Love? Want to do something special for your spouse to show how much you care? Attend a Lutheran Marriage Encounter Weekend and focus on just the two of you. Engaging presentations by both lay and clergy leaders give you tools and information while exercises and conversations with your spouse in the privacy of your hotel room revitalize romance, deepen communication, and nourish the spirituality in your marriage. The Spring Lutheran Marriage Encounter Weekends in Minnesota are February 10-12 (think Valentines!) in Brooklyn Center, March 23-25 in Duluth and May 4-6 in Walker. Please register several weeks in advance. For more information, contact Dick & Judy Dehnel at [952-432-3105](tel:952-432-3105), Pete & Phyllis McMahon at [763-561-1575](tel:763-561-1575) or visit www.godlovesmarriage.org.

Thank you to Pam and Pat and all the volunteers for helping out with the Community Christmas Dinner. All your hard work is very much appreciated.

—First Lutheran Staff

Thank you to all of those that donated items to the Mitten Tree project and to Toys for Tots. Your generosity is very much appreciated.

Thank you for your recent donation of \$507.51! It is through the generosity and support of donors like you that our food shelf is able to provide services that are vital to improving the quality of life for our neighbors in need. Your gift is truly an investment in our community. Thanks again for your support!

—Stevens County Food Shelf

The Congregational Life Committee would like to thank the Women of First for their continuing efforts in raising funds for the purchase of new chairs for the fellowship hall. The chairs have arrived! Please enjoy them at coffee hours and the Advent suppers.

Thank you to everyone for their prayers, cards, phone calls and concerns. What a blessing for us! A special thank you to Pastor Paul for spending time with Sherm. What a caring community we live in. God bless you all.

—Sherman & Betty Waage

All the staff at First Lutheran would like to thank everyone for their cards, gifts, treats and Christmas wishes. May God's LOVE and PEACE be with you in the New Year!

THANK YOU!! We had another wonderful Sunday School Christmas program this year! Thank you to everyone who contributed to the success of this program. A special thank you to Jane Johnson, Jenni Hintz and Lisa Dybdal for all of their hard work in directing the program. Thank you to all the teachers, assistants and parents for their hard work and especially to our Sunday School students for putting on such a wonderful program. Another thank you goes to all that brought treats for fellowship time as well as to the council members and confirmation students who helped serve and clean up after. You are all a blessing to the church!



JANUARY BIRTHDAYS

- 1) Brenda Boever, Deb Kolden
- 2) Peg Wellendorf
- 3) Doug Ehlers, Jane Johnson, Mary Ann Scharf,
Julie Thymian
- 4) Jimmi Lembcke
- 5) Andrew Hutchings, Jeni Johnson, Gary Wagner
- 6) Ron Rosen
- 7) Emilie Brustuen
- 8) Brooklyn Sterud
- 9) Ryan Anderson, Owen Beyer
- 10) Elizabeth Buss
- 11) Brock Anderson, Philip Ask, Dennis Neisius
- 12) Doug Beyer, Renee Ersted, Kylie Forslin,
Allan Saugstad
- 13) Thomas Daniels, Jazlynn Hilbrands
- 14) Grady Fossum, Glen Gillespie, Cheryl Higgins,
Emma Spors
- 17) Jone Anderson, Stacy Erdal, Karen Johnson,
Alicia Moorhouse, Cara Rudney-Grussing
- 19) Steve Just, Sarah Larson, Cole Watzke
- 20) Gwen Pieske
- 21) Jayson Galligan-Hable
- 23) Elaine Sax
- 25) Jeanne Halbe, Adrienne Hilbrands,
Penny Nemmers
- 26) Mark Gunderson
- 27) Luella Anderson, Mace Okeson
- 29) Gwyneth Hanson, Jo Ann Person, Molly Wayne
- 30) Carl Benson
- 31) Jenni Nystrom, Blaine Hills, Kaylee Harstad,
Hunter Flicek



LAST THINGS

WORD SEARCH PUZZLE



- | | |
|-------------------------|---------------------|
| ARRESTED | NAZARITE |
| ASCENSION | PARABLES |
| BAPTISM | PASSOVER |
| BETRAYED | PHARISEES |
| BREAD | PONTIUS PILATE |
| CROSS | PROPHECY |
| CROWN OF THORNS | RABBI |
| CRUCIFIXION | RAISED THE DEAD |
| DISCIPLES | RESURRECTION |
| FLOGGING | RIGHTEOUS |
| GARDEN OF
GETHSEMANE | SACRIFICE |
| GOSPEL | SAVIOUR |
| HEALED THE SICK | SERMON ON THE MOUNT |
| IMMANUEL | SHEPHERD |
| JESUS CHRIST | SINLESS |
| JEW | SON OF GOD |
| JOSEPH | SON OF MAN |
| LAST SUPPER | TEMPTATIONS |
| LORD | TOMB |
| MARY | WALKED ON WATER |
| MASTER | WILDERNESS |
| MESSIAH | WINE |

Sunday	Monday	Tuesday	Wednesday	Thursday	Friday	Saturday
1 8:15 AM Worship with Holy Communion 9:15 AM Coffee Hour 10:45 AM Worship (baptism of Jonathan VanAlstine)	2 Office Closed	3 New Wine Pizza Sales Due 7:00 AM Common Cup Board Meeting 7:30 AM Men's Bible Study at Common Cup 1:30 PM Staff Mtg 6:00 PM Worship & Music 6:45 PM All Committee Night	4 2:00 PM Pastor Paul at Skyview 6:00 PM Choir 7:00 PM Special Council Meeting	5 6:00 PM Education Committee Meeting 6:30 PM Cub Scouts	6 7:11 AM Breakfast Club	7
8 8:15 AM Worship 9:15 AM Coffee Hour 9:30 AM Education Hour 10:45 AM Worship with Holy Communion 5:00 PM Epiphany Tree Burning Service 6:00 PM Boy Scouts 7:00 PM New Wine Rehearsal	9	10 7:30 AM Men's Bible Study at Common Cup 1:30 PM Staff Mtg 5:15 PM Audit 6:30 PM Council Meeting	11 12:00 PM Care Core 5:30 PM - 7:15 PM Confirmation 6:00 PM Choir	12 8:30 AM Share & Care 6:30 PM Cub Scouts	13 7:11 AM Breakfast Club	14 9:00 AM Contemporary Worship Rehearsal 9:00 AM New Wine Pizza Factory
15 Installation Sunday for Pastor Paul 8:15 AM Worship with Holy Communion 9:15 AM Coffee Hour 9:30 AM Education Hour 10:45 AM Worship 12:00 PM Potluck 7:00 PM New Wine Rehearsal	16 9:00 AM - 6:30 PM Ski Trip to Andes Tower Hills	17 7:30 AM Men's Bible Study at Common Cup 1:30 PM Staff Mtg 2:00 PM Pastor Paul at West Central Christian Homes 7:00 PM Zipporah Bible Study	18 5:30 PM - 7:15 PM Confirmation 6:00 PM Choir	19	20 7:11 AM Breakfast Club 7:00 PM Movie: A Shot in the Dark	21
22 8:15 AM Worship 9:15 AM Coffee Hour 9:30 AM Education Hour 10:45 AM Worship with Holy Communion 7:00 PM New Wine Rehearsal	23	24 7:30 AM Men's Bible Study at Common Cup 1:30 PM Staff Mtg 6:00 PM Staff Christmas Party	25 12:00 PM Care Core 5:30 PM - 7:15 PM Confirmation 6:00 PM Choir	26 8:30 AM Share & Care	27 7:11 AM Breakfast Club	28 9:00 AM New Wine Sunday Rehearsal
29 New Wine Sunday 8:15 AM Worship with Holy Communion 9:15 AM Coffee Hour 9:30 AM Annual Meeting 9:30 AM Education Hour 10:45 AM Worship with Holy Communion	30	31 7:30 AM Men's Bible Study at Common Cup 1:30 PM Staff Mtg				

Anniversary

**FIRST LUTHERAN CHURCH
200 EAST 5TH ST
MORRIS MN 56267
Address Service Requested**

**NON-PROFIT ORGANIZATION
U.S. POSTAGE PAID
MORRIS MN
PERMIT #83**

**FIRST
LUTHERAN
CHURCH**
*Chosen by Christ
Empowered to Serve*

FIRST LUTHERAN CHURCH (ELCA)

Chosen by Christ; Empowered to Serve

Pastor Paul J. Erdal paul@firstlutheranmorris.org
Missionaries—Dirk and Sarah Stadlander dirknsarah@hotmail.com
Rita Bye—Office Manager office@firstlutheranmorris.org
Mark Gunderson—Custodian
Kate Livingston—Financial Secretary finsec@firstlutheranmorris.org
Deb Mahoney—Organist
Denise Odello—Contemporary Worship Team Director
Wanda Dagen—Choir Director
Kristi Abler, RN & Vicki Maanum, RN—Parish Nurses